



**City of Conway, Arkansas  
Resolution No. R-18-\_\_\_\_\_**

**A RESOLUTION ACCEPTING THE PROPOSAL TO SELECT A CIVIL ENGINEER SERVICE FOR THE DESIGN OF STREET, SIDEWALK, PARKING AND DRAINAGE IMPROVEMENTS ALONG SIEBENMORGEN ROAD FOR THE COMMUNITY DEVELOPMENT DEPARTMENT; AND FOR OTHER PURPOSES**

**Whereas**, the Community Development Department solicited bids on February 13<sup>th</sup>, 2018 for civil engineers for professional services for the design of street, sidewalk, parking, and drainage improvements along Siebenmorgen Road from Lincoln Street to Ingram Street as part of the Pine Street Revitalization project; and

**Whereas**, Six proposals were submitted and Crafton and Tull was the selected civil engineer accepted for this project; and

**Whereas**, this project will be funded from the Community Development Block Grant-Program Year 2017.

**NOW, THEREFORE, BE IT ORDAINED BY THE CITY COUNCIL OF THE CITY OF CONWAY, ARKANSAS THAT:**

**Section 1.** The City of Conway shall accept the bid from Crafton and Tull for the Siebenmorgen drainage and sidewalk improvements from Lincoln Street to Ingram Street.

**Section 2.** All ordinances in conflict herewith are repealed to the extent of the conflict.

**PASSED** this 13<sup>th</sup> day of March 2018.

**Approved:**

\_\_\_\_\_  
**Mayor Tab Townsell**

**Attest:**

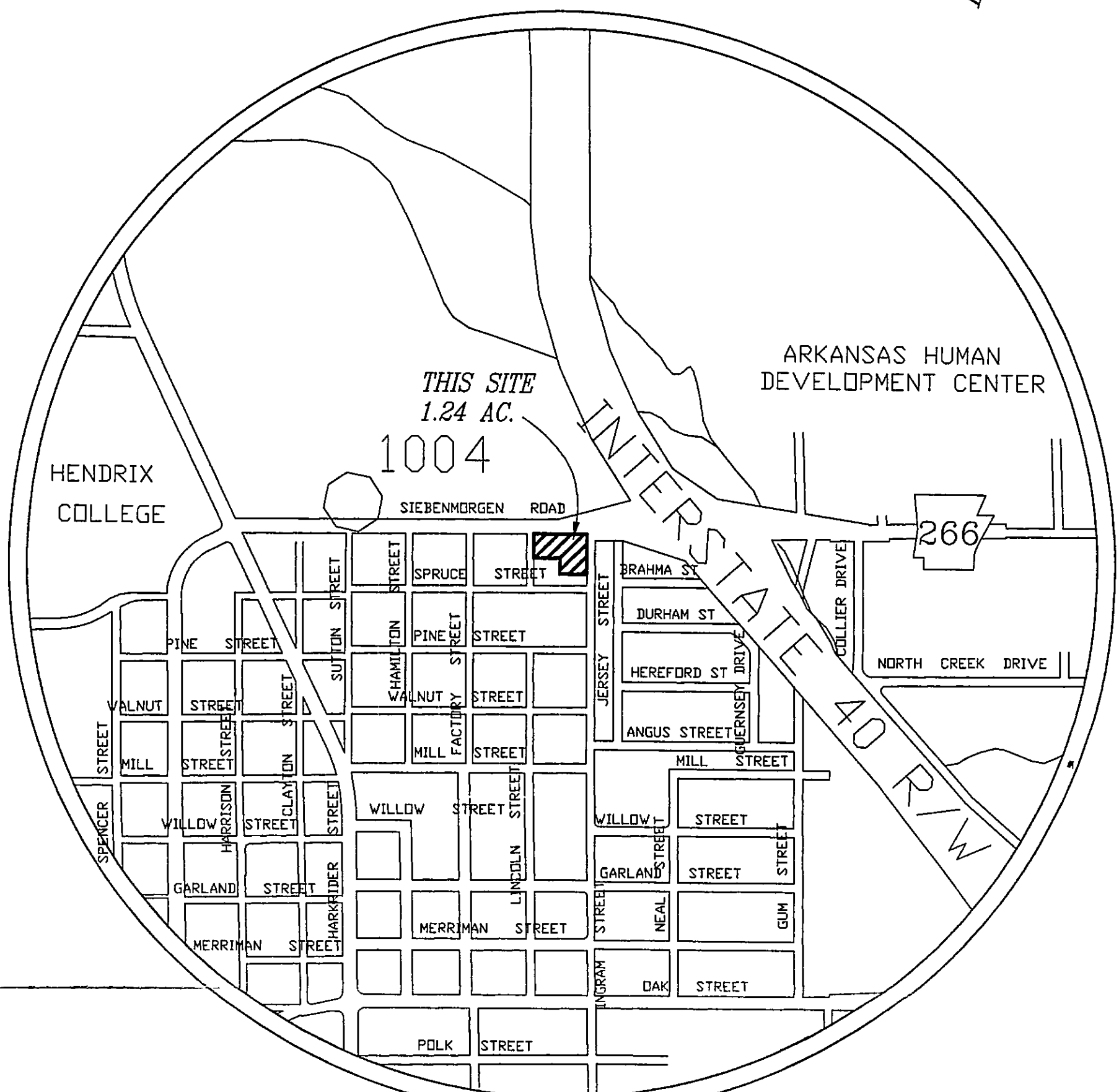
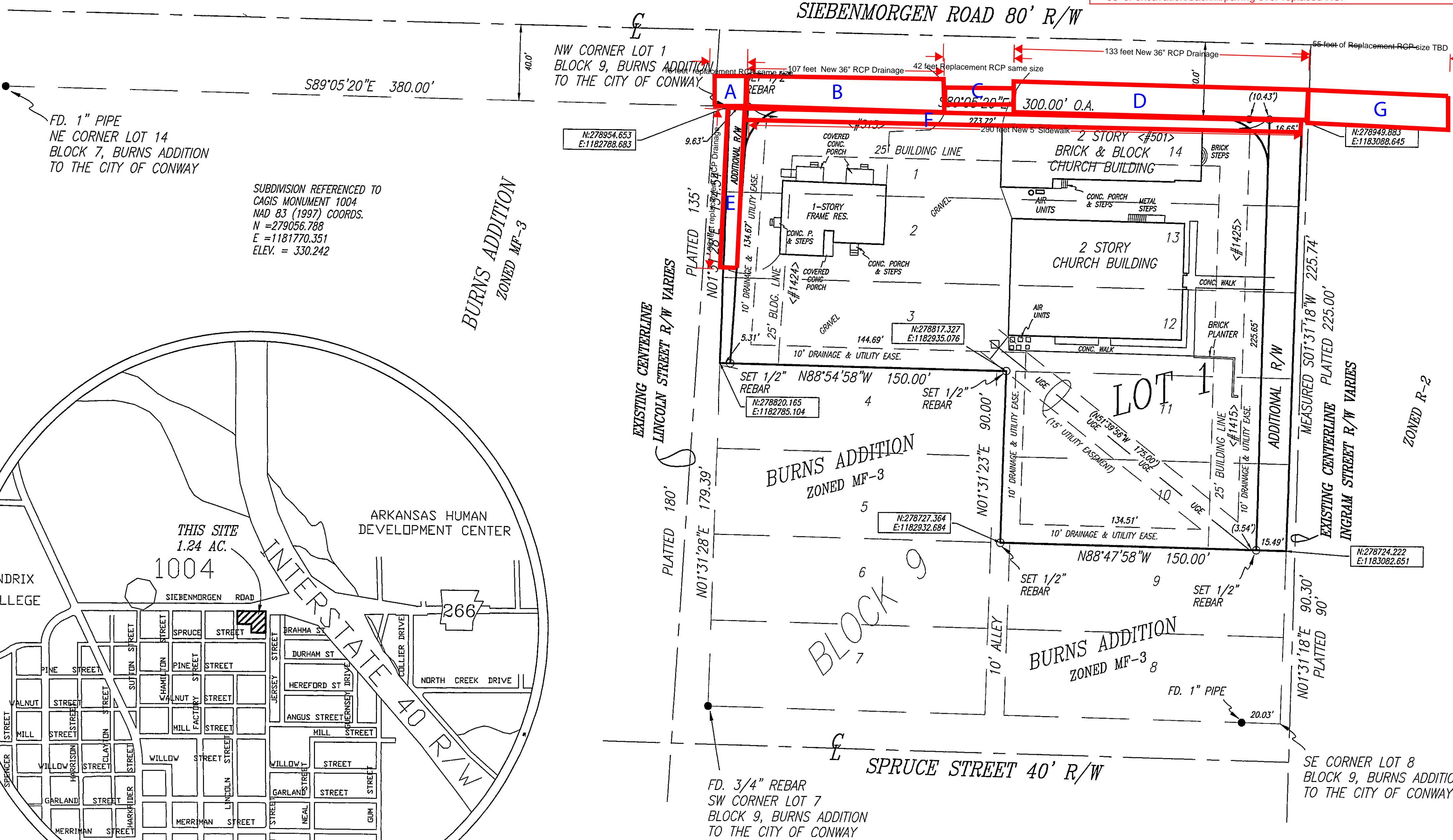
\_\_\_\_\_  
**Michael O. Garrett  
City Clerk/Treasurer**

# ACTS REPLAT

LYING IN THE NW 1/4 SW 1/4 SECTION 6  
T-5-N, R-13-W, FAULKNER COUNTY,  
ARKANSAS

ZONED S-1

- A - 16' of Replacement RCP Drainage same size
- 16' excavation/backfill/repaving of 1/2 street extension over drainage
- B - 107' of New 36" RCP Drainage
- 107' of excavation/backfill/paving of 1/2 street extension over Drainage
- C - 42' of Replacement RCP Drainage same size
- 42' of excavation/backfill/paving of 1/2 street extension over drainage
- D - 133' of New 36" RCP Drainage
- 133' of excavation/backfill/paving of 1/2 street extension over drainage
- E - 95' Replacement RCP and tie in to "A" section, size TBD.
- Potential excavation/backfill/paving to existing street (as determined by Engineer design)
- F - 290' of New 5' Sidewalk
- (2) Handicap ramps at each end of sidewalk
- G - 55' of Replacement RCP Drainage, size TBD by Engineer
- 55' of excavation/backfill/paving over replaced RCP



VICINITY MAP  
1 INCH EQUALS 2000 FEET

**Certificate of Owner**

We the undersigned, owners of the real estate shown and described herein, do hereby certify that we have laid off, platted, and subdivided and do hereby lay off, plat, subdivide said real estate in accordance with this plat and do hereby dedicate to the use of the public the (streets, alleys, drives, easements, etc.) as shown on said plat.

Date of Execution: 11-29-00

Signed: Frank Steuber  
Agape Community Temple of Servants  
1425 Ingram Street  
Conway, Arkansas, 72032

Source of Title: D.R. 618 Page 641  
D.R. 612 Page 147  
D.R. 612 Page 145  
D.R. 622 Page 171  
D.R. 646 Page 495  
D.R. 1999 Page 2268

FILED  
FOR RECORD  
Date 12-1-00  
at 9:15 o'clock A.M.  
SHARON RIMMER, CLERK  
By CB D.C.

This property is serviced by Conway Utilities. Water and Sewer— Conway, Arkansas, Faulkner County.  
Zoning of property MF-3

Note:  
Iron pins are set at all lot corners and at points of curve. Lots with rounded corners are 25' radius unless noted otherwise. Distances on curves are chord distances. All easements shall be for general utilities and or drainage. Building lines are 25' unless noted otherwise. All easements are 7.5' wide on each side of lot lines unless other wise noted. The error of closure is 1 to 9999.

This plat was prepared by Tim P. Tyler, Arkansas Professional Land Surveyor No. 1243  
#51 West Cadron Ridge Road, Greenbrier Arkansas 72058 Phone 679-2015

LEGAL DESCRIPTION:  
Lots 1-3, Lots 10-14 and part of the alley of Block 9 Burn's Addition to the City of Conway, Arkansas, as shown on Plat of Records in Plat Book A Page 46, records of Faulkner County, better described as beginning at the NW corner of Lot 1 Block 9 Burn's Addition; thence along the North side of Block 9 S89°05'20"E 300.00 feet; thence along the east line of said Block 9 S01°31'18"W 225.74 feet; thence N88°47'58"W 150.00 feet; thence N01°31'23"E 90.00 feet; thence N88°54'58"W 150.00 feet to the west line of said Block 9; thence N01°31'28"E 134.54 feet to the point of beginning, containing 1.24 acres more or less.

This property is not in the 100 year flood plain according to Flood Insurance Rate Map #05045C0130 F, Panel 130 of 250, dated June 2, 1994.

**Certificate of Recording**

This document No. \_\_\_\_\_ filed for record 19 day of December, 2000 in Plat Book No. 5, page 238.

Signed: Sharon Rimmer  
Sharon Rimmer,  
Faulkner County Circuit Clerk  
By: CBanner

**Certificate of Surveying Accuracy**

I Timothy P. Tyler, hereby certify that this plat correctly represents a boundary survey made by me and boundary markers and lot corners shown hereon actually exist and their location, type and material are correctly shown and all minimum requirements of the Arkansas Minimum Standards for Land Surveyors have been met.

Date of Execution: 11-29-00

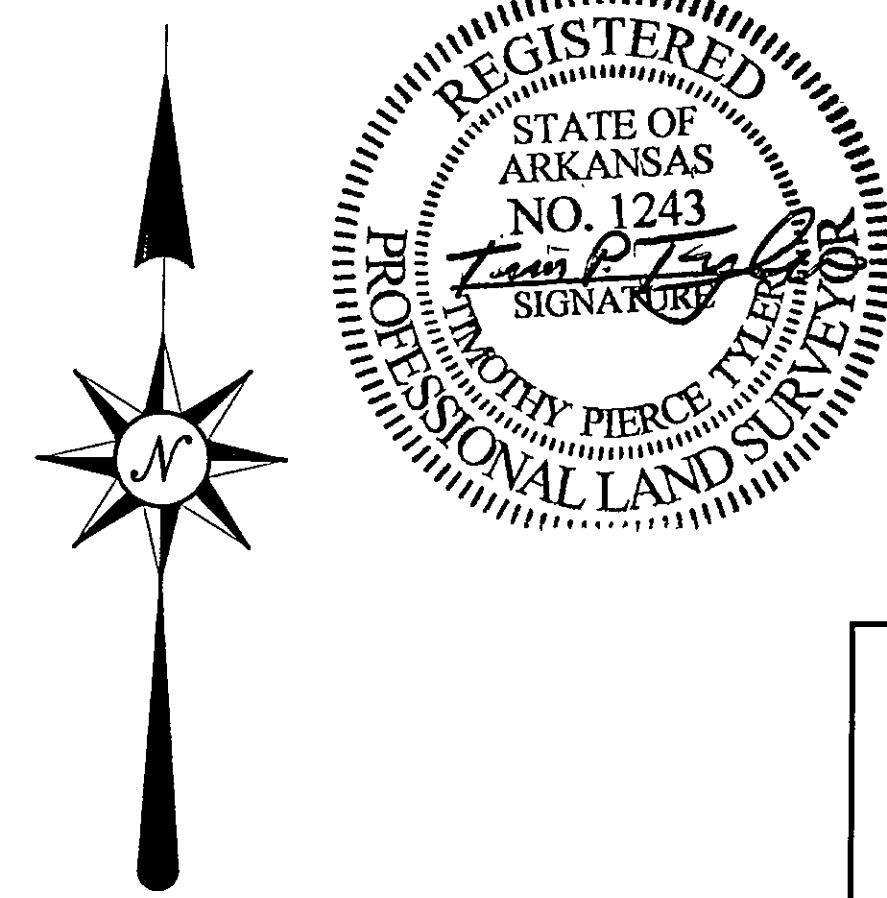
Signed: Tim P. Tyler  
Registered Land Surveyor  
No. 1243  
State of Arkansas

**Certificate of Final Plat Approval**

Pursuant to the Conway Subdivision Regulations and all other conditions and approval having been completed, this document is hereby accepted. This Certificate is hereby executed under the authority of the said rules and regulations.

Date of Execution 12-1-00

Signed: Michay Silva  
Conway Planning Commission  
Chairman



CERTIFICATE OF RECORD  
State of ARKANSAS  
County of FAULKNER  
I hereby certify that this instrument was FILED FOR RECORD and is RECORDED on the DATE and TIME and in the BOOK and PAGE as stamped hereon.  
DATE: 12-1-2000 TIME: 9:15 A.M.  
BOOK: Plat 5 PAGE: 238  
SHARON RIMMER  
Faulkner County Circuit Clerk  
and Ex-Officio Recorder Faulkner County  
By: CBanner D.C.

## ACTS REPLAT



DESIGNED BY	TIM TYLER SURVEYING AND MAPPING	SCALE	1" = 50'
DRAWN BY		JOB NO.	CHURCHRP
CHECKED BY		SHEET NO.	1 OF 1
DATE	25 SEPT. 2000	PH. 679-2015	FAX 679-2138
STATE CODE			